

ORACLE®



ORACLE®

Building Visually Appealing Web 2.0 Data Dashboards

Frank Nimphius

Senior Principal Product Manager, Oracle

Program Agenda

- Overview of Data Visualizations
- Demo: Building a Web 2.0 Dashboard
- Q & A



Take Aways

- Learn how to build visually-appealing dynamic Web dashboard
- Learn how you can create interactive graphs, geographic maps, pivot tables, gauges and more
- Learn how to use declarative SQL queries and the power of the Oracle ADF Faces data visualization components to extract meaning from your data

Program Agenda

- Overview of Data Visualizations
- Demo: Building a Web 2.0 Dashboard
- Q & A



Oracle Fusion Applications



Oracle Fusion Applications

ORACLE Fusion Applications Personalization - Help - Sign Out John Michaels

Home Navigator - Recent Items - Favorites - Tags - Watchlist - Setup Search

Order Orchestration

Manage Fulfillment Lines

Advanced Search Saved Search All Fulfillment Lines

Search Results

| Exception Type | Source Order | Warehouse Name | Customer | Item | Item Description | Ordered Quantity | Status | Requested Ship Date | Scheduled Ship Date |
|----------------|-----------------------------|----------------------|-------------|--|------------------|-------------------|------------|---------------------|---------------------|
| Direct Sales | Dallas Manufacturing | Private Technologies | FR-0425-TP1 | Oracle Exadata Database Machine Full Rack - X2-2 | 2 | Shipped Delayed | 10/02/2010 | 10/16/2010 | |
| Contact Center | Dallas Manufacturing | Ysion Technologies | FR-0425-TP1 | Oracle Exadata Database Machine Full Rack - X2-2 | 3 | Assembly | 10/01/2010 | 10/16/2010 | |
| Internal Order | Dallas Manufacturing | Oracle Direct Center | FR-0425-TP1 | Oracle Exadata Database Machine Full Rack - X2-2 | 3 | Awaiting Shipping | 10/17/2010 | 10/17/2010 | |
| Direct Sales | Dallas Manufacturing | Ysion Technologies | FR-0425-TP1 | Oracle Exadata Database Machine Full Rack - X2-2 | 3 | In Manufacturing | 10/17/2010 | 10/17/2010 | |
| Direct Sales | Seattle Distribution Center | Accent Tech | FR-0425-TP1 | Oracle Exadata Database Machine Full Rack - X2-2 | 6 | In Manufacturing | 11/06/2010 | 11/06/2010 | |
| Contact Center | Seattle Distribution Center | Accent Tech | FR-0425-TP1 | Oracle Exadata Database Machine Full Rack - X2-2 | 2 | Shipped Delayed | 10/02/2010 | 10/20/2010 | |
| Contact Center | Seattle Distribution Center | Serenity Systems | FR-0425-TP1 | Oracle Exadata Database Machine Full Rack - X2-2 | 4 | Awaiting Shipping | 10/20/2010 | 10/20/2010 | |
| Self Service | Seattle Distribution Center | Ysion Technologies | FR-0425-TP1 | Oracle Exadata Database Machine Full Rack - X2-2 | 4 | Manual Scheduling | 11/06/2010 | 11/06/2010 | |

Rows Selected: 1 Columns Hidden: 76 Columns Frozen: 8

Fulfillment Line 102069 - 1.1: Details

Item: FR-0425-TP1 Customer: Open Orchestration Orders for This Customer by Age Order: Fulfillment Line Exceptions for This Order

Item Availability: Seattle Distribution Center, Dallas Manufacturing. Legend: Available Quantity, Allocated Quantity, Shelf Quantity.

Customer Order Counts by Age: 0-1, 2-3, 4-5, 6-7, 8-9, 10-11. Legend: Open Orders.

Order Status: Past due, In progress, Backordered, On hold. Legend: Exceptions.

Attributes: General, Scheduling, Shipping, Item Details, Holds.

ORACLE Fusion Applications Personalization - Help - Sign Out Julian Henderson

Home Navigator - Recent Items - Favorites - Tags - Watchlist - Setup Search

Identify Sales Targets

Currency = US Dollar

Analysis Criteria: Customer, Products, Recommendations. Recommendation Type: Both new product opportunities and upgrades, Only new product opportunities, Only upgrades. Probability to Buy: [Slider]. Estimated Sales Cycle (Days): [Slider]. Estimated Revenue Amount: [Slider]. Recommendation Date Range: On or after, On or before. Potential Revenue Heat Map Display: Recommendations only, Marketing leads only, Both Recommendations and Marketing leads. Marketing Lead Status: [Dropdown].

Sales Targets: Recommendations: 88 Average Potential Revenue: 240,279 Average Estimated Sales Cycle (Days): 72

Display: Potential Revenue Recommended List

| Product | Customer Total Revenue | | Estimated Revenue | | | |
|----------------------------|--|------------------------------|---|-------------------------------|--|-------------------------------|
| | Oracle Exadata Database Machine Full Rack - X2-2 | Oracle Sun ORAC - Enterprise | Oracle Exadata Database Machine Quarter Rack - X2-2 | Oracle Exadata Storage Server | Oracle Exadata Database Machine Full Rack - X2-2 | Sun Stor CT 9000 Blade Server |
| Product Total Revenue | 11,974,131 | 3,982,908 | 1,000,000 | 1,023,291 | 1,254,000 | 4,017,954 |
| Zenon Corporation | 2,296,603 | | | | | |
| NetScout | 2,127,000 | | | | | |
| Synergy Technology Express | 1,172,800 | | | | | |
| Network Spine Ltd. | 1,037,000 | | | | | |
| Private Technologies | 1,032,400 | | | | | |
| A. C. Networks | 1,002,144 | | | | | |
| Altebris Inc. | 942,504 | | | | | |
| Times Technology | 710,000 | | | | | |
| Serenity Systems | 705,722 | | | | | |
| Accent Tech | 550,000 | | | | | |
| CognusTech | 143,567 | | | | | |
| Zenex Inc. | 90,000 | | | | | |
| Private Technologies | 65,963 | | | | | |

JDeveloper - Unified Visual Development

The screenshot displays the Oracle JDeveloper 11g Release 1 IDE. The main workspace is divided into several panes:

- Project Explorer (Left):** Shows the project structure for 'Application59', including folders for 'classes', 'resources', 'BPELProcess1', 'Business Rules', 'View Controller', and 'Application Sources'.
- Design Canvas (Center):** Displays a BPMN diagram on the left and a web page preview on the right. The BPMN diagram shows a process flow starting with 'receiveInput' and followed by 'callB2BClient'. The web page preview shows a 'Departments' page with a bar chart and a table.
- Properties Inspector (Bottom):** Shows the properties of the selected component, including 'Appearance', 'Behavior', 'Advanced', and 'Customization'.
- Component Palette (Right):** Lists various ADF Faces components such as 'Input Combobox List Of Values', 'Input Date', 'Input File', 'Input List Of Values', 'Input Number Slider', 'Input Number Spinbox', 'Input Range Slider', 'Input Text', 'Link', 'Media', 'Menu', 'Menu Item', 'Message', 'Layout', and 'Operations'.

The Properties Inspector shows the following settings for the selected 'Text' component:

- Flex: 0
- InflexibleHeight: 100
- StretchChildren: <default> (none)
- Icon: <default> (none)
- Rendered: <default> (true)
- Text: Tab
- AccessKey: <default> (none)
- TextAndAccessKey: <default> (none)

ADF Faces Rich Client Components

- Component approach to page construction
- Visual and declarative development
- Ajax baked-in the component
- The standard UI platform at Oracle
 - Oracle Fusion Applications
 - Oracle Products
 - Web Center
 - SOA
 - Enterprise Manager
 - More...



ADF Data Visualization Graph

More than 50 types including pie, bar, line, bubble, funnel, and stock graphs

- **Interactivity**

- Active Data Enabled
- Animation
- Data Highlighting
- Dynamic Reference Objects
- Interactive Pie Slices
- Master-Detail
- Scrollable Legend
- Selection
- Time Selector
- Zoom and Scroll

- **Sparkcharts**



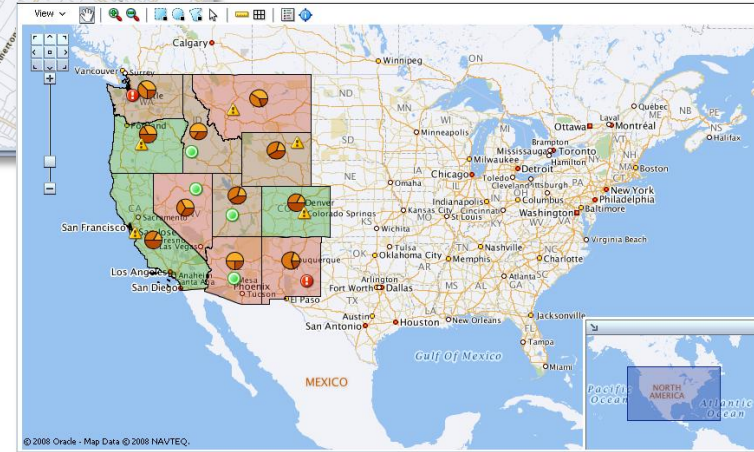
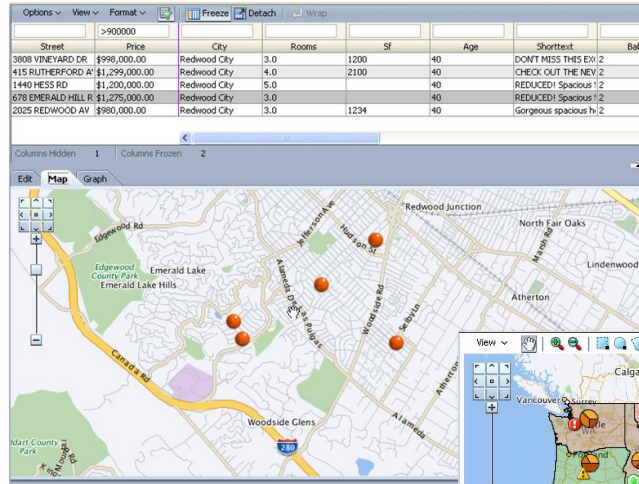
ADF Data Visualization Gauge

- Quickly track key performance indicators
- Available Types:
 - Dial
 - Status Meter
 - Vertical Status Meter
 - LED
 - Arrow, Bulb, Rectangle, Triangle
- Animation and Interactivity
- Custom Graphics Support



ADF Data Visualization Geographic Map

- Functionality of Oracle Spatial within ADF
- View business data on a map
- Format by:
 - Color
 - Pie
 - Bar
 - Point
- Active data support



ADF Data Visualization Pivot Table

- Multiple layers on row and column edges
- Supported features include:
 - Drag and drop pivoting
 - Horizontal and vertical scrolling
 - Cell, row and column selection
 - Header and cell formatting
 - Automatic totals/subtotals
 - Data filtering
 - Drilling
 - Sorting
 - Cell editing
 - Stamping, e.g. data bars in cells
- Pivot Filter Bar

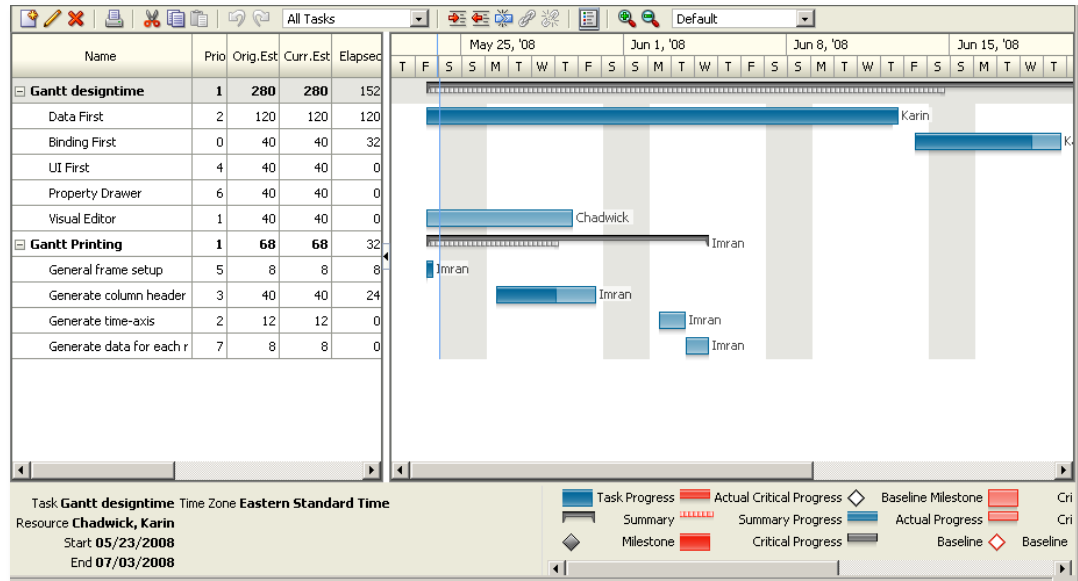
| | | Sales | | Units | |
|------|--------|--------------|--------|--------------|--------|
| | | All Channels | | All Channels | |
| | | World | Boston | World | Boston |
| 2007 | Tents | 20000.0 | 500.0 | 200.0 | 50.0 |
| | Canoes | 15000.0 | 1500.0 | 75.0 | 8.0 |
| 2006 | Tents | 10000.0 | 250.0 | 100.0 | 25.0 |
| | Canoes | 7500.0 | 750.0 | 40.0 | 4.0 |
| 2005 | Tents | 5000.0 | 125.0 | 50.0 | 15.0 |
| | Canoes | 3750.0 | 375.0 | 20.0 | 2.0 |

| | | | Dollars | Units | Dollars/Units | |
|--------|-----------------|-----------------|------------|-------|---------------|--|
| Gloss | 1998 | CENTRAL REGION | Enterprise | | | |
| | | EASTERN REGION | Enterprise | | | |
| | | SOUTHERN REGION | Enterprise | | | |
| | | WESTERN REGION | Enterprise | | | |
| | 1999 | | Magicolor | | | |
| | | CENTRAL REGION | Enterprise | | | |
| | | EASTERN REGION | Enterprise | | | |
| | | SOUTHERN REGION | Enterprise | | | |
| Flat | 1998 | | McClosey | | | |
| | | EASTERN REGION | McClosey | | | |
| | | | Valspar | | | |
| | | WESTERN REGION | McClosey | | | |
| | 1999 | | McClosey | | | |
| | | | Valspar | | | |
| | | EASTERN REGION | McClosey | | | |
| | | | Valspar | | | |
| 2000 | SOUTHERN REGION | McClosey | | | | |
| | WESTERN REGION | McClosey | | | | |
| Primer | 1999 | EASTERN REGION | McClosey | | | |
| | | SOUTHERN REGION | McClosey | | | |

| | | Audio Components | Video Components | Gaming |
|------------------|-----------|------------------|------------------|--------|
| ▼ First Quarter | January | 5,000 | 10,000 | |
| | February | 5,400 | 14,000 | |
| | March | 5,800 | 18,000 | |
| ▼ Second Quarter | April | 2,000 | 10,000 | |
| | May | 2,400 | 14,000 | |
| | Jun | 2,800 | 18,000 | |
| ▼ Third Quarter | July | 5,000 | 10,000 | |
| | August | 5,400 | 14,000 | |
| | September | 5,800 | 18,000 | |

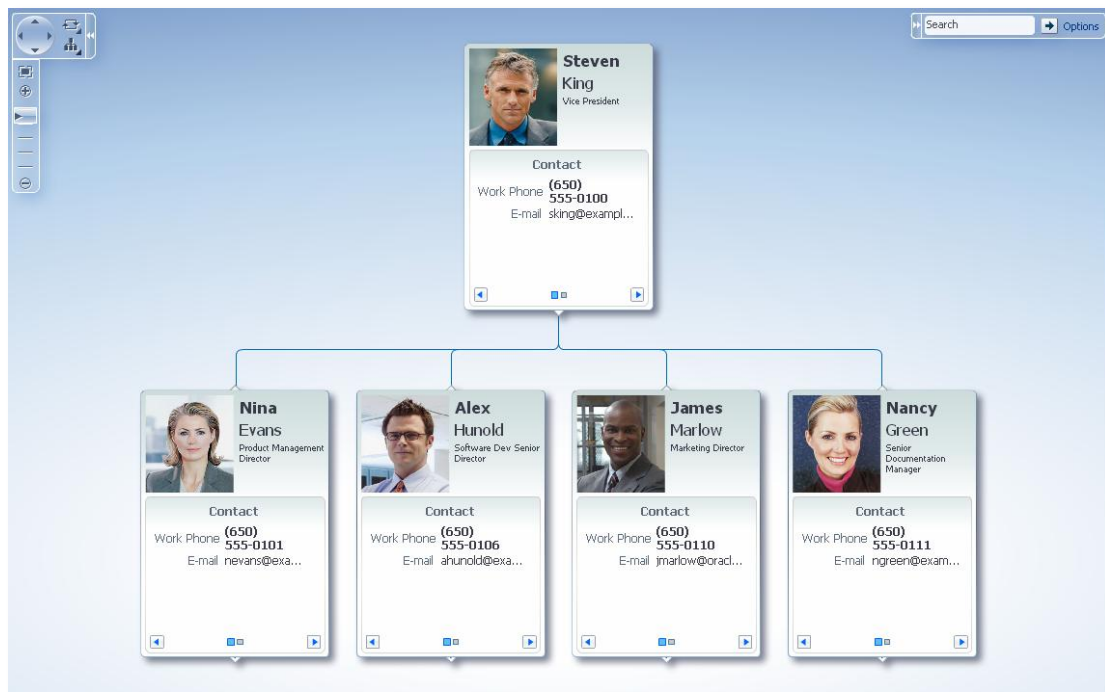
ADF Data Visualization Gantt Chart

- Track tasks and resources over time for project planning
- Project Gantt (project management)
- Scheduling Gantt (resource management)
- Resource Utilization Gantt (resource utilization)



ADF Data Visualization Hierarchy Viewer

- View hierarchical data
- Often used for org charts
- Features:
 - Multiple PanelCards for details
 - Multiple layouts
 - Progressive disclosure of details
 - Expand/collapse nodes
 - Rendering simple ADF components inside the nodes
 - Search



Program Agenda

- Overview of Data Visualizations
- Demo: Building a Web 2.0 Dashboard
- Q & A



Demo

Building a Web 2.0 Dashboard

Program Agenda

- Overview of Data Visualizations
- Demo: Building a Web 2.0 Dashboard
- Q & A



Join the JDeveloper/ADF Community



Twitter

twitter.com/JDeveloper



Facebook

facebook.com/JDeveloper



Oracle's JDeveloper PM blog

[blogs.oracle.com/ JDeveloperpm](https://blogs.oracle.com/JDeveloperpm)

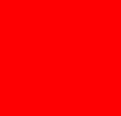
oracle.com/technetwork/jdev



For More Information

- www.oracle.com/technetwork/jdev
- Tutorials
- Demos
- Software
- Discussions
- Blogs
- And more...





The preceding is intended to outline our general product direction. It is intended for information purposes only, and may not be incorporated into any contract. It is not a commitment to deliver any material, code, or functionality, and should not be relied upon in making purchasing decisions. The development, release, and timing of any features or functionality described for Oracle's products remains at the sole discretion of Oracle.

Q & A