

ORACLE®

Oracle Cloud and Enterprise Manager 12c Overview

Avi Miller

Principal Program Manager – Oracle Linux and Virtualization



Total Cloud Control

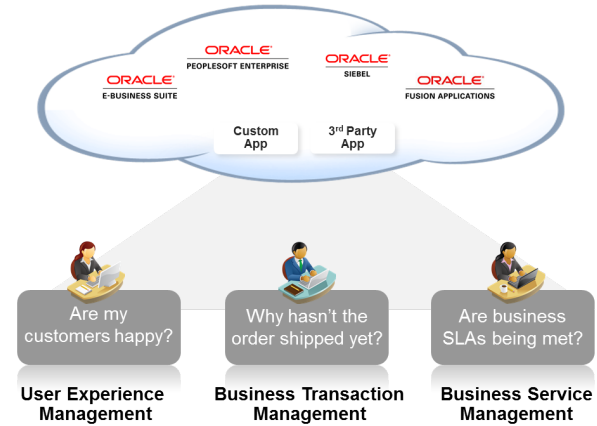
ORACLE®
ENTERPRISE MANAGER 12^c



Complete Lifecycle Management



Integrated Cloud Stack Management



Business-Driven Application Management

Self-Service IT

Simple and Automated

Business Driven

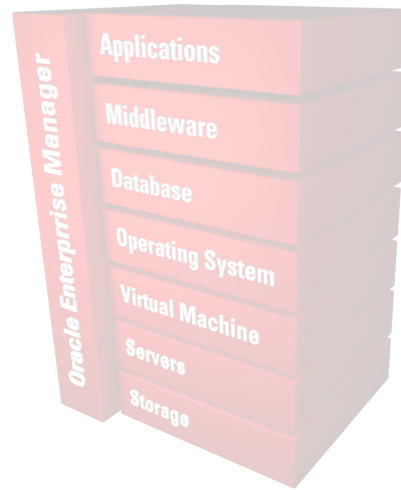


Total Cloud Control

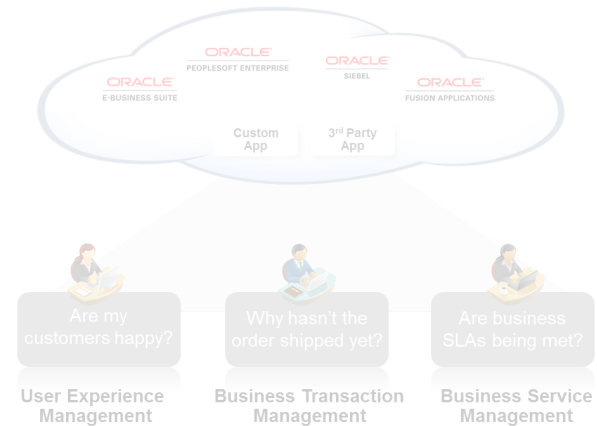
ORACLE
ENTERPRISE MANAGER **12^c**



Complete Lifecycle Management



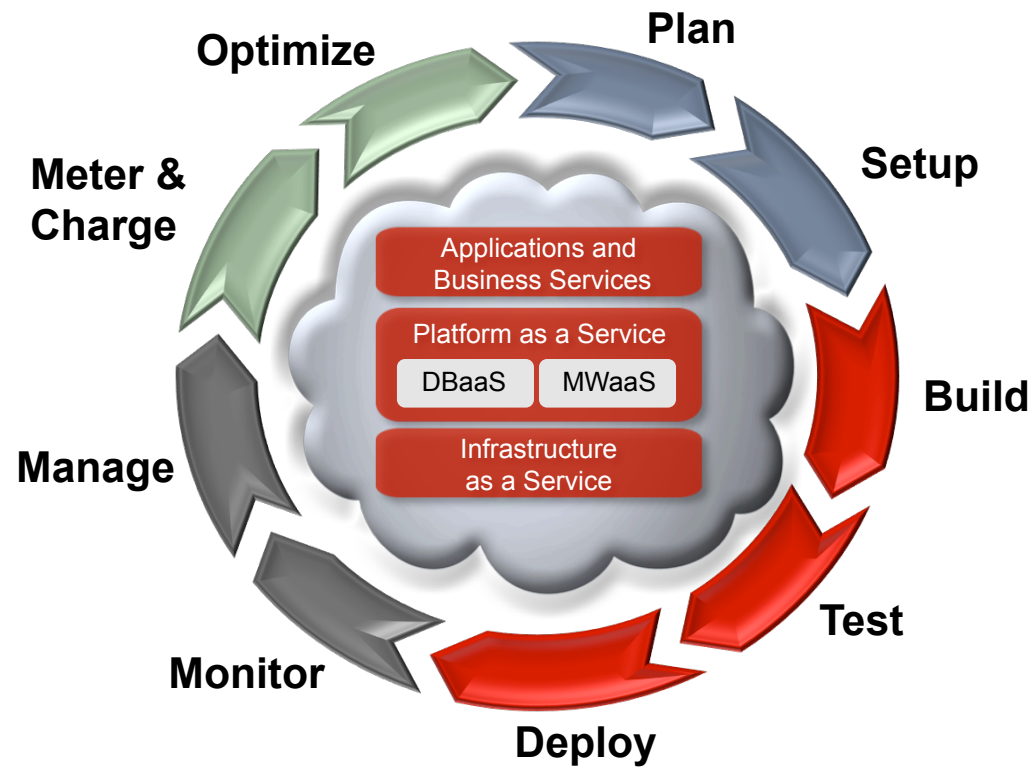
Integrated Cloud Stack Management



Business-Driven Application Management

Self-Service IT | Simple and Automated | Business Driven

Complete Cloud Lifecycle Management



Plan and Setup the Cloud Environment



- Discover IT assets
- Plan capacity and consolidation
- Setup cloud services
- Define access rules and controls

The screenshot displays the Oracle Cloud Management console. The top section, 'Auto Discovery Results', shows a workflow for configuring auto discovery, adding targets from results, and adding targets manually. Below this is a table of discovered targets. The main section is the 'Consolidation Planner', which shows a table of consolidation scenarios. The table has columns for Project (Scenario), Type, Status, Sources, Destinations, Ratio, Mapping, Confidence (%), Violations, Exceptions, Creation Date, and Description. The scenarios listed are KE_1000_P2P, KE_Scenario_1002_Custom, KE_1001_P2V, and KE_Scenario_1003_Custom. The bottom section shows the details for 'KE_Scenario_1003_P2V (KE_1001_P2V)', including its name, ID, description, project name, data analysis status, resource types, applicable days, resource allocation, data start and end dates, specified constraints, destination server type, and consolidation goal.

Project (Scenario)	Type	Status	Sources	Destinations	Ratio	Mapping	Confidence (%)	Violations	Exceptions	Creation Date	Description
√ KE_1000_P2P	P2P	Collecting over minimum	3							Jun 22, 2011	Description
√ KE_Scenario_1002_Custom	Custom	Analysis completed	3	1	3	Automatic	100	✓	✓	Jun 22, 2011	Description
√ KE_1001_P2V	P2V	Collecting over minimum	3							Jun 22, 2011	Description
√ KE_Scenario_1003_Custom	Custom	Analysis completed	3	1	3	Automatic	100	✓	✓	Jun 22, 2011	Description

KE_Scenario_1003_P2V (KE_1001_P2V)

General Destinations Ratio Mapping Confidence Violations Exceptions

Scenario Name: KE_Scenario_1003_P2V
Scenario Identification Number: 1003
Description:
Project Name: KE_1001_P2V
Data Analysis Status: Analysis completed
Resource Types: CPU (SPECint@_rate_base2006)
Applicable Days: All Days
Resource Allocation: Conservative
Data Start Date: Earliest Available
Data End Date: Latest Available
Specified Constraints: 0
Destination Server Type: New generic servers
Consolidation Goal: Consolidate to the fewest destination servers



Cloud Management and Virtualization

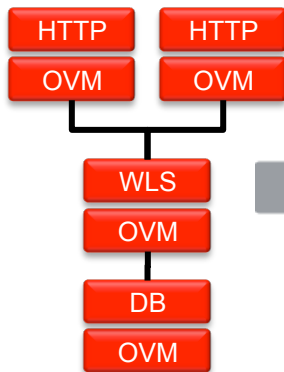
- Oracle VM Plug-in is free to use and configure
- Oracle VM supports both x86, SPARC and Solaris Containers
- Single click provisioning of multi-tier apps via assemblies
- Self-service provisioning and management of VMs, Storage and Network
- RESTful APIs
- Policy driven scale up and down, live migration and power management

Package Multi-tier Enterprise Applications

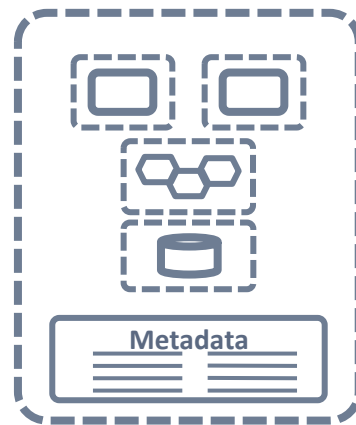
Oracle Virtual Assembly Builder



Capture Complete Application Topology



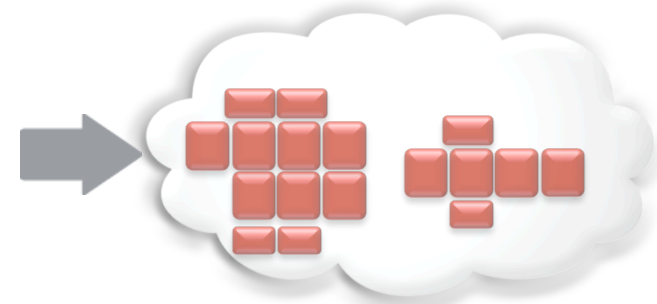
Package Into Single Assembly



Upload to Software Library



Deploy Self-Service

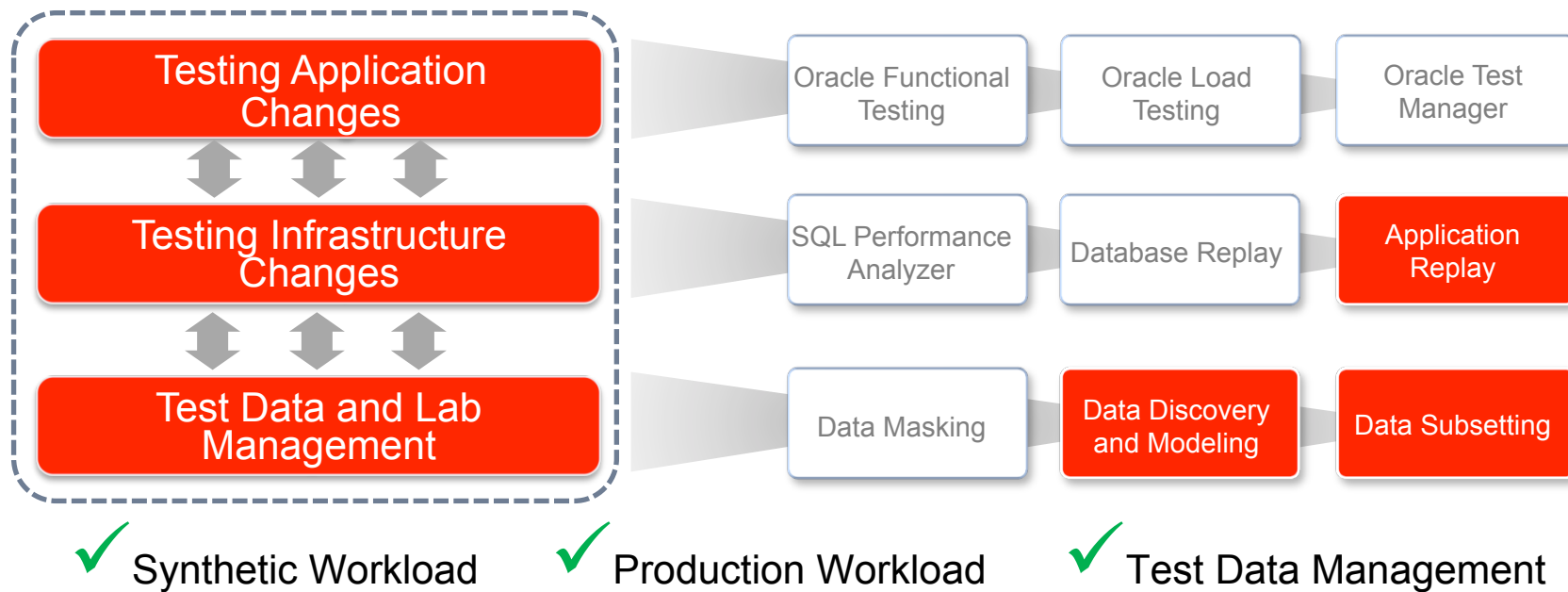


ORACLE[®]
VM

ORACLE[®]

Test Applications End-to-End

Automate Application, Middleware and Database Testing

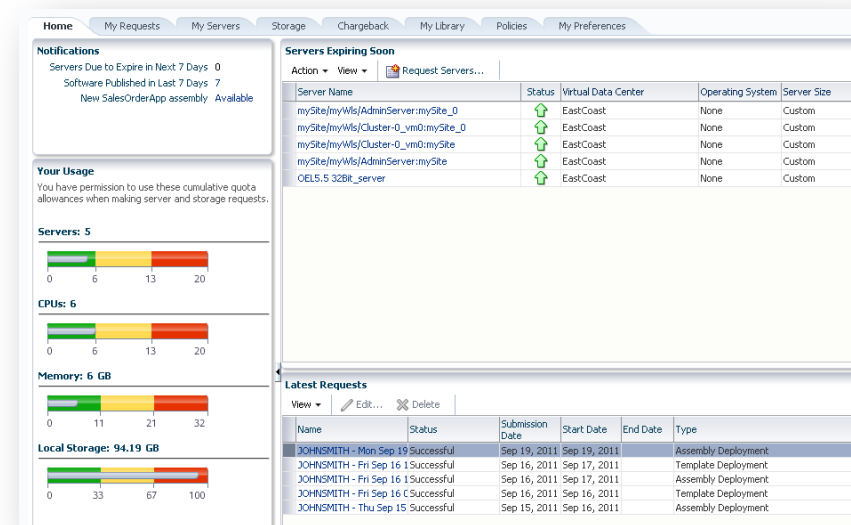


Self-Service Access

Self-Service Freedom, Professional Control



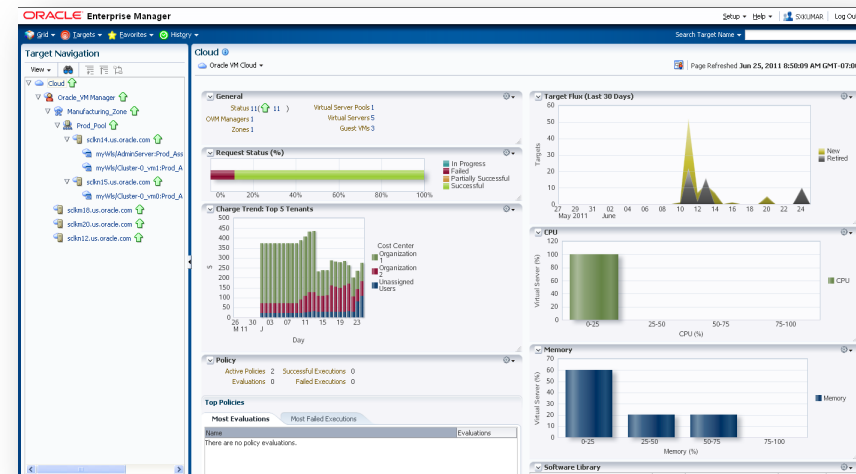
- Infrastructure-as-a-Service (IaaS)
 - x86 and SPARC
- Platform-as-a-Service (PaaS)
 - Database (DBaaS), Java,....
 - Physical and virtual environment support
- Out-of-box Portal and APIs



Monitor and Manage Cloud Operations



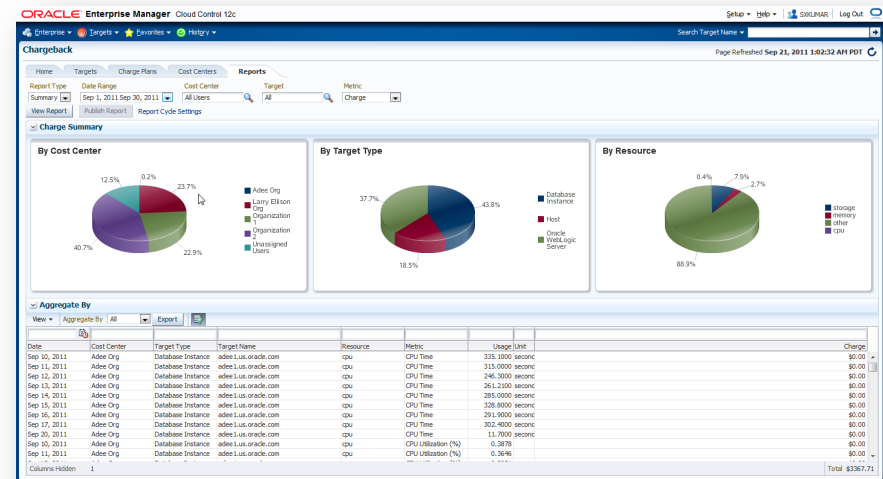
- Track resource flux, tenants, policy violations, etc
- Monitor requests and failures
- Manage resource and capacity utilization
- Automatic, policy driven elasticity



Meter, Charge and Optimize Cloud Services



- Application-to-Disk resource metering
- Chargeback/Showback
- Oracle Billing and Revenue Management (BRM) Integration
- Optimize performance, capacity, QoS, costs...





Total Cloud Control

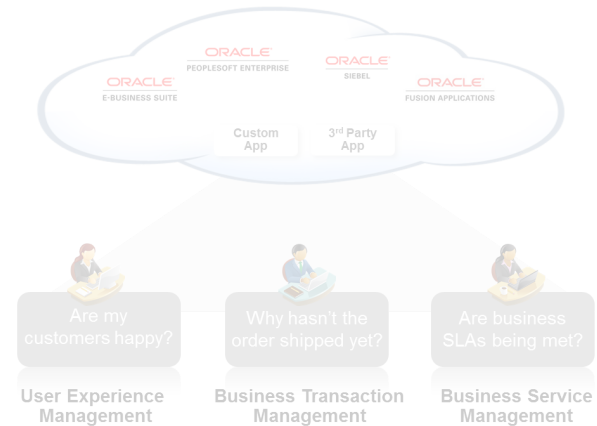
ORACLE
ENTERPRISE MANAGER **12^c**



Complete Lifecycle Management

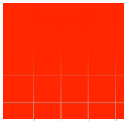


Integrated Cloud Stack Management



Business-Driven Application Management

Self-Service IT | Simple and Automated | Business Driven



PERFORMANCE

RELIABILITY

MANAGEABILITY

SECURITY

**INTEGRATED
TECHNOLOGY
STACK**

SUPPORT

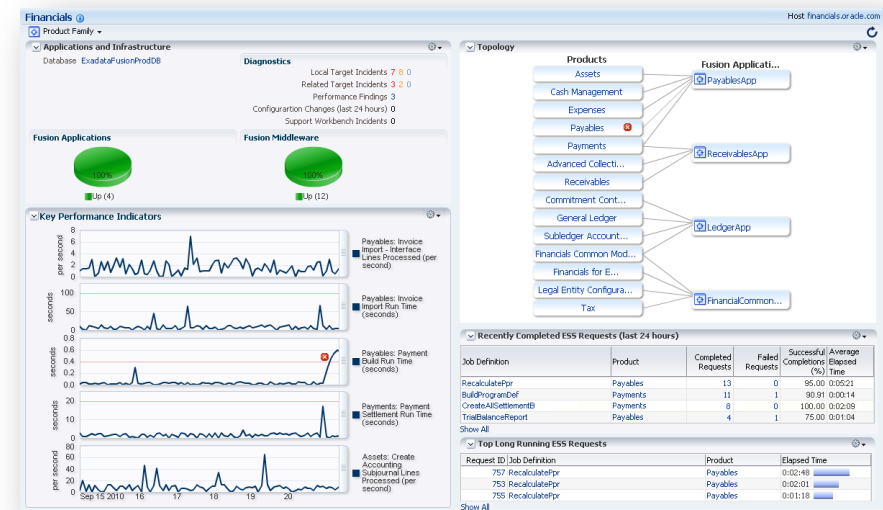


Fusion Applications Management

Deep, Integrated, Business-Driven



- Application discovery, modeling and monitoring
- Integrated business-IT view
- Performance, configuration and lifecycle management



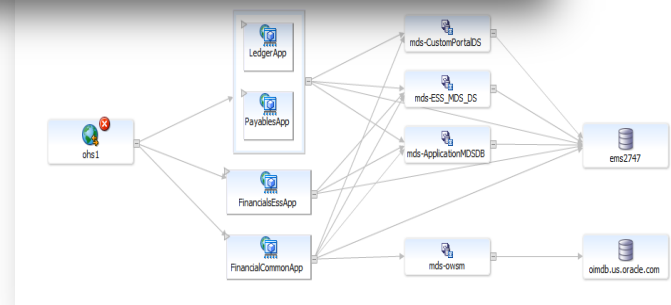
Middleware Management

New Automation to Lower TCO



- Deep and integrated application performance management
 - Middleware diagnostics advisor
 - Automatic metric correlation
 - Multi-domain log viewer
 - Routing topology
- Provisioning Automation
 - Domain scale up, scale-out
 - App deploy, undeploy

Thread Name	Request	Appl	OS PID	Current Call	File Name	CPU State	Waiting On	Wait Kind	Resource	Lock Held
Thread-467	22790-2:com.sun.jdbc.Connection.java	857	Network			857	Network		java.io.BufferedOutputStream	
Thread-468	22790-2:com.sun.jdbc.Connection.java	857	Network			857	Network		java.io.BufferedOutputStream	
[ACTIVE] ExecuteThread: 22 for queue: weblogic.kernel.Default (self-tuning)	262	22790-2:weblogic.jdbc.wrapper.PreparedStatementImpl	131	DB Stmt	Demo	548	SQL	SQL	oracle.jdbc.driver.T4CConn	
weblogic.threadpool.DefaultThread	22790-2:oracle.jdbc.driver.T4CConn	131	Statement			131	Statement			
weblogic.work.DefaultWorkThread	99	99	DB Stmt	Demo	548	SQL	SQL	SQL	oracle.jdbc.driver.T4CConn	

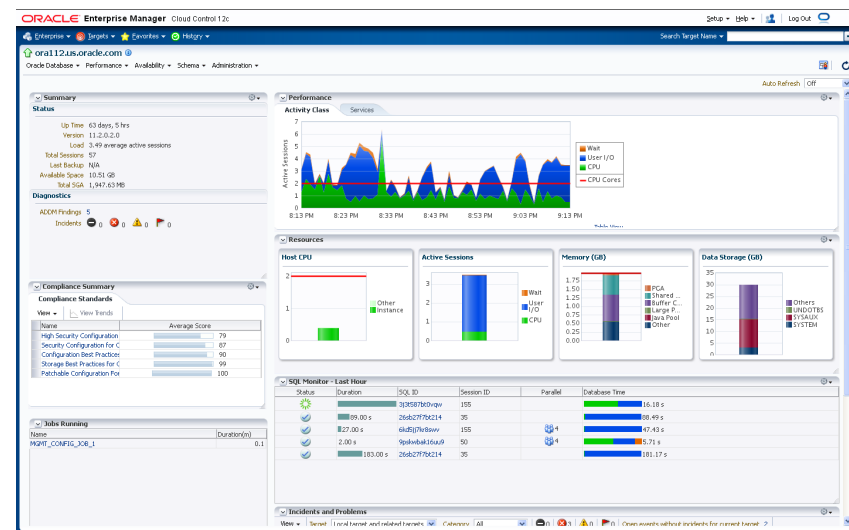


Database Management

Extending Database Self-Management Leadership



- Advance Performance Diagnostics
 - Real-Time ADDM
 - Compare Period ADDM
 - Active Session History (ASH) Analytics
- Mass Database Upgrade Automation
- Minimal Downtime Patching



Engineered Systems Management

Exadata and Exalogic



- Integrated hardware and software management
 - Hardware schematics and alerts
 - Integrated and deep software management
 - Hardware and software topology, configuration management
- Proactive support
 - “Phone home”
 - Health checks
 - Patch and best practices advisory

The screenshot displays the Oracle Enterprise Manager Cloud Control 12c interface. The main window shows the 'DB Machine slcb06.us.oracle.com' overview. The 'Database Machine Schematic' view is active, showing a rack of hardware components. The components are listed in a table with their status (Up/Down) and a legend for component types.

Component	Status
slcb06cel14	Up
slcb06cel13	Up
slcb06cel12	Up
slcb06cel11	Up
slcb06cel10	Up
slcb06cel09	Up
slcb06cel08	Up
slcb06db08	Up
slcb06db07	Up
slcb06db06	Up
slcb06db05	Up
slcb06sw-ib3	Up
slcb06sw-kvm	Up
ucf-clz6-aq94-oob-zw11.ucf.oracle.com	Up
slcb06sw-ib2	Up
slcb06db04	Up
slcb06db03	Up
slcb06db02	Up
slcb06db01	Up
slcb06cel07	Up
slcb06cel06	Up
slcb06cel05	Up
slcb06cel04	Up
slcb06cel03	Up
slcb06cel02	Up
slcb06cel01	Up
slcb06sw-ib2	Up

Legend:

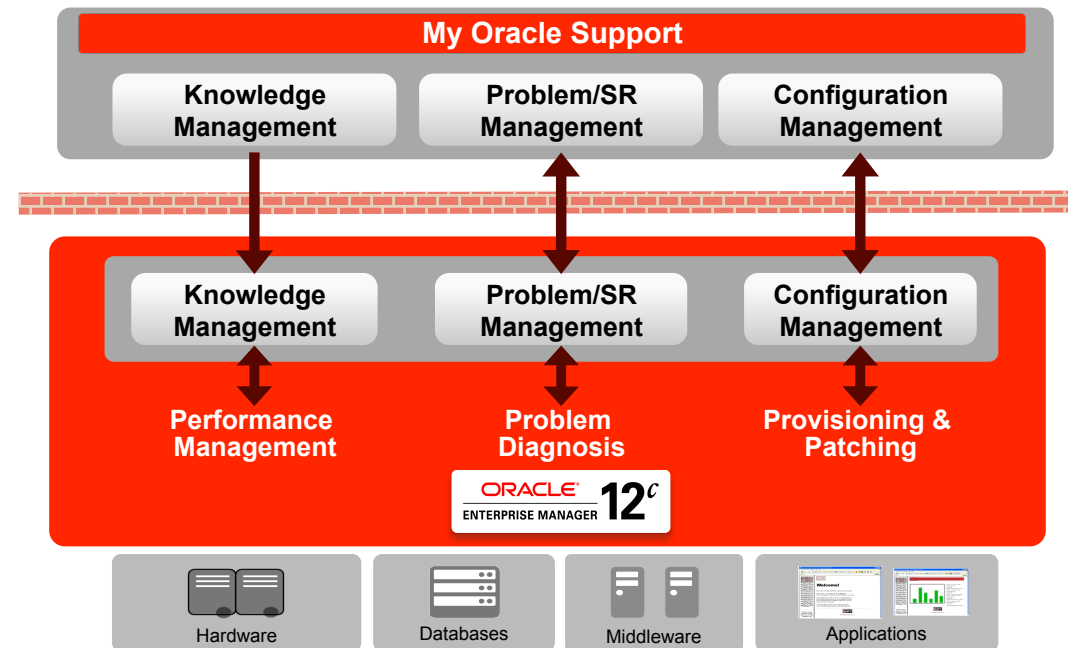
- Up (Green circle)
- Down (Red square)
- Exadata Cell (Grey square)
- Compute Node (Light blue square)
- Infiniband Switch (Dark blue square)
- Ethernet Switch (White square)
- Keyboard-Video-Mouse (Black square)

Proactive Support

My Oracle Support Integration



- Proactive Patch Advisory
- **Certification Checks**
 - End-of-life advisory
- **Upgrade Planning and Automation**
- Hardware Telemetry and Phone Home

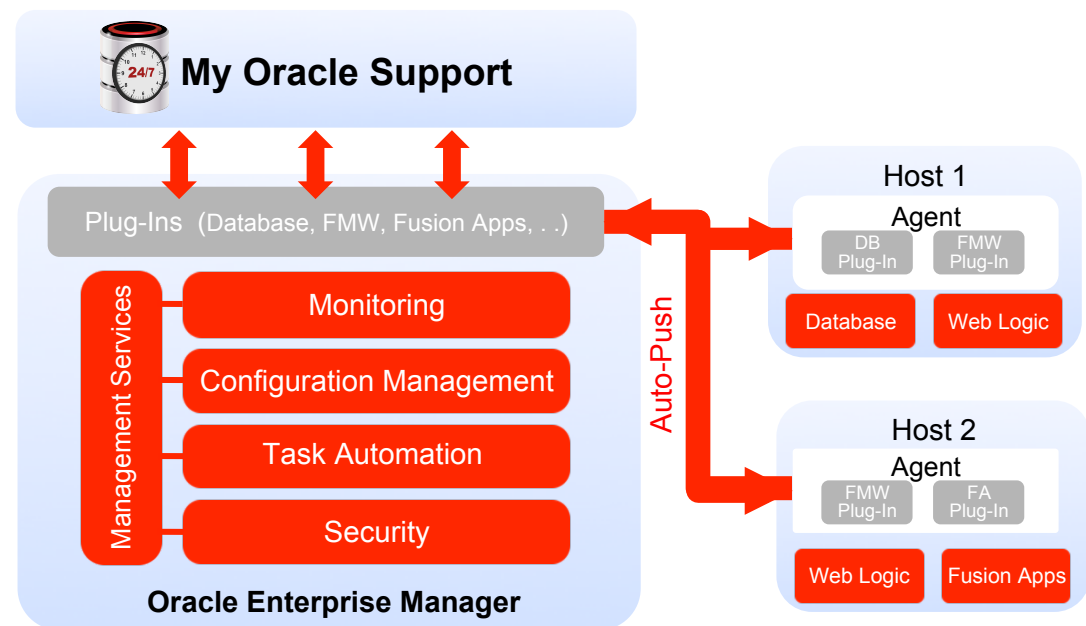


New Massively Scalable Framework

Robust, Extensible, Secure



- Better performance and scalability
- Self-update
- Enhanced security
- New web 2.0 user interface
- Powerful configuration management



Oracle Enterprise Manager Partner Ecosystem

Delivering Services and Products for the Cloud



New Extensibility
Development Kit and
Partner-Built Plug-Ins



Specialized. Recognized by Oracle.
Preferred by Customers.

90+ Partners

- Enterprise Management Specialization
- Application Quality Management Specialization (brand new)



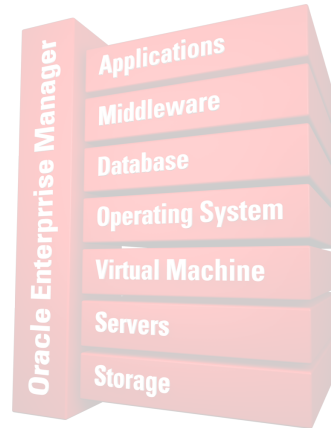


Total Cloud Control

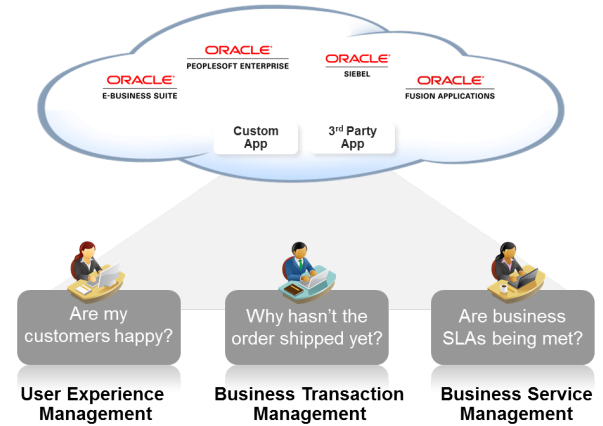
ORACLE
ENTERPRISE MANAGER **12^c**



Complete Lifecycle Management



Integrated Cloud Stack Management

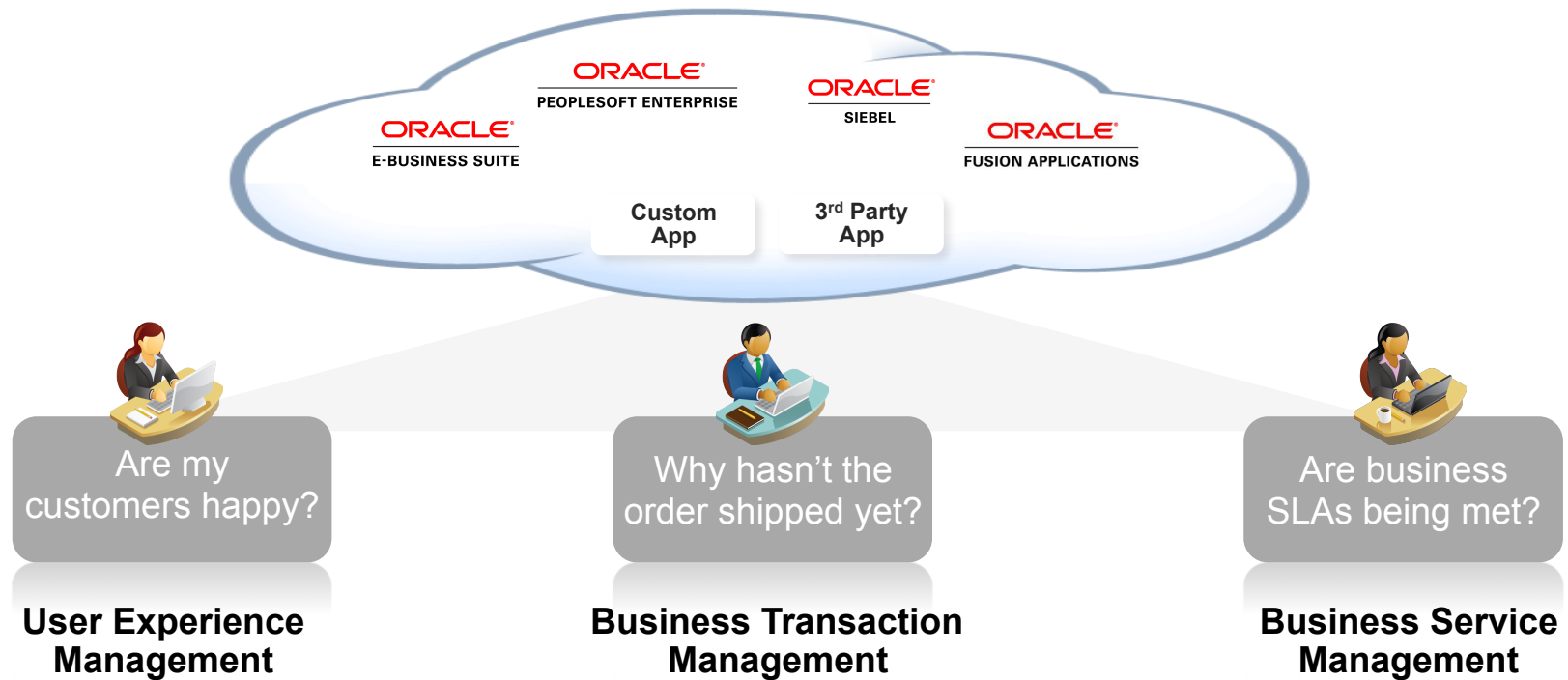


Business-Driven Application Management

Self-Service IT | Simple and Automated | Business Driven

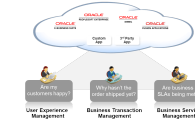
Business Driven Application Management

Clouds Optimized For Business Services

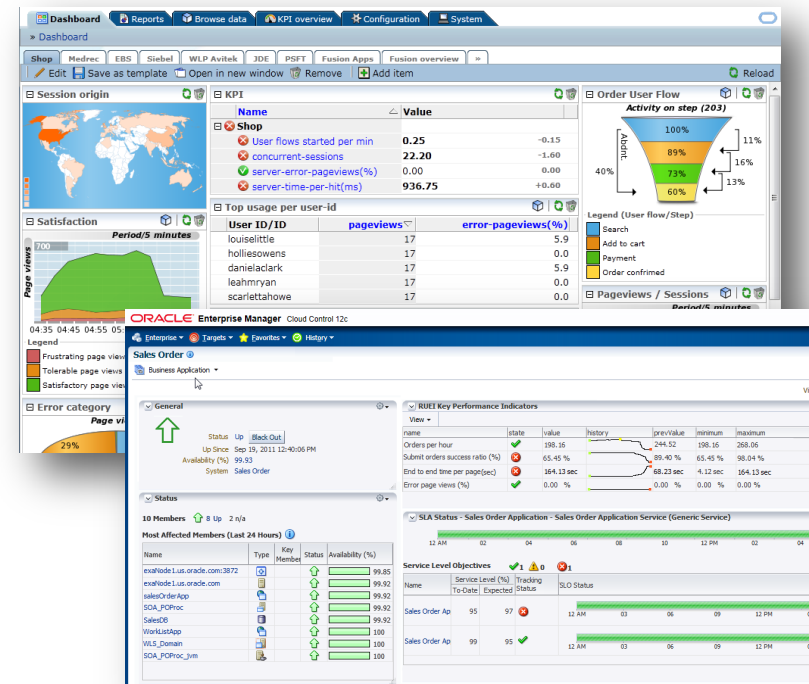


Real User Experience Insight

End User Analytics and Performance Management



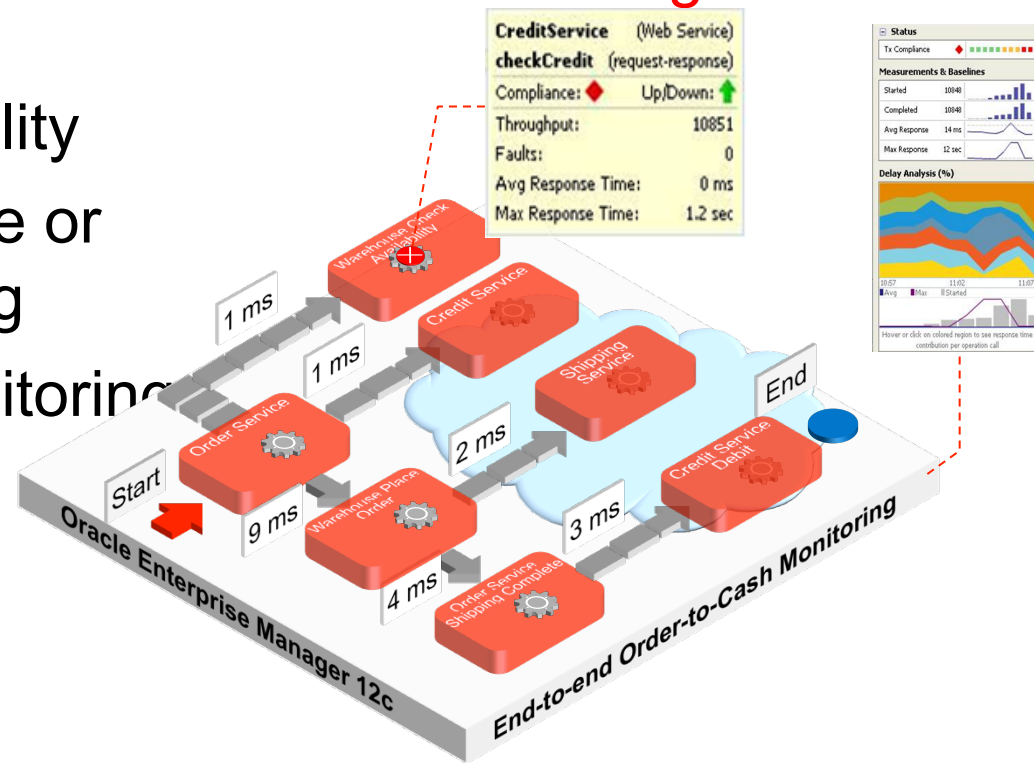
- Massively scalable
 - 500M page views and higher
- Fine grained monitoring
- Integrated user experience and application performance monitoring



Business Transaction Management

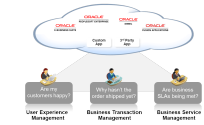
Cross Tier, Cross Application Transaction Tracing

- 10x increase in scalability
- Aggregate performance or transaction level tracing
- Flexible logging & monitoring policies

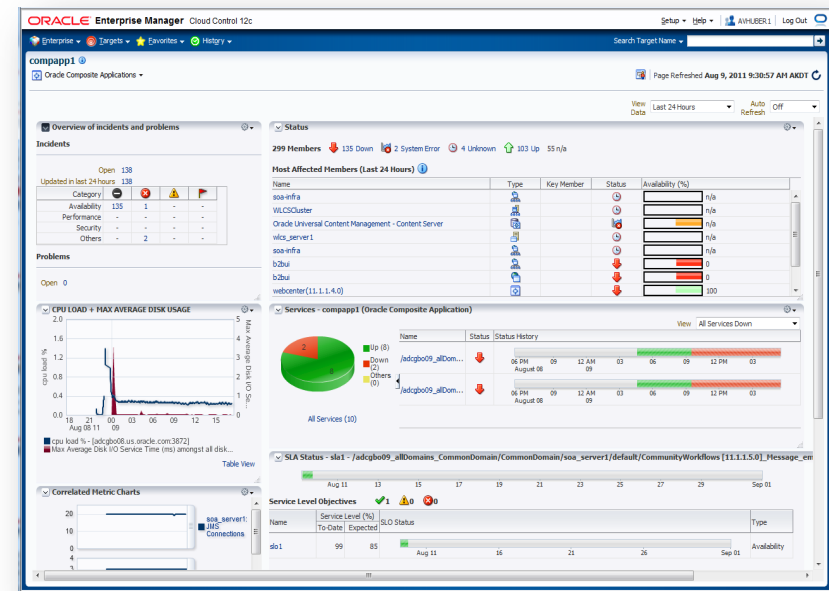


Business Service Management

Discovery, Management and Component Diagnostics



- Composite application management
- Service lifecycle management
- Enhanced SLA management





Total Cloud Control

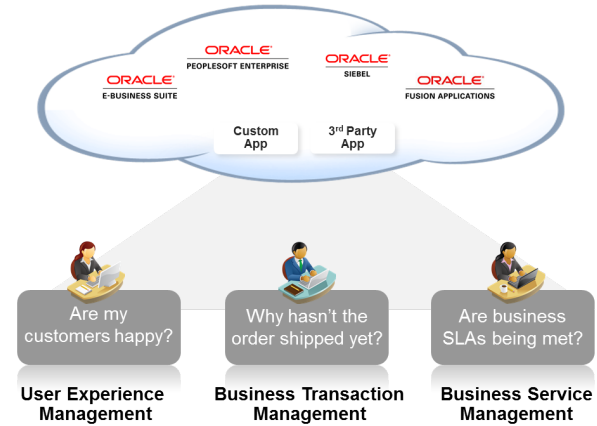
ORACLE[®] ENTERPRISE MANAGER 12^c



Complete Lifecycle Management



Integrated Cloud Stack Management



Business-Driven Application Management

Self-Service IT | Simple and Automated | Business Driven

Hardware and Software

ORACLE®

Engineered to Work Together

ORACLE®